

twilight

INSTRUMENTOS DE MEDICIÓN INDUSTRIAL

PosiTector SHD, Shore D, Estándar, DeFelsko

DF-SHDD1


www.twilight.mx

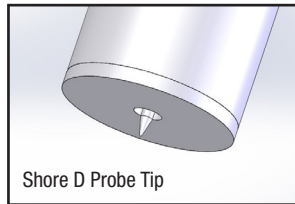
 / [twightsadecv](#)

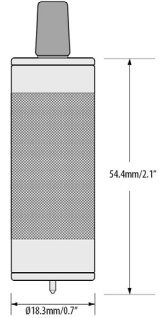
 / [twightsadecv](#)

 / [twightsadecv](#)

Order Code	Description
<input checked="" type="checkbox"/> SHDD1	PosiTector Standard with SHD D Probe
<input type="checkbox"/> SHDD3	PosiTector Advanced with SHD D Probe

PosiTector [®] SHD Shore Hardness Durometer		Compare PosiTector Gage Bodies	
Features	Standard	Advanced	
High contrast, reversible color LCD with backlit display	●	●	
Statistics Mode — Instantly calculate average, standard deviation, min/max thickness and number of readings while measuring	●	●	
Two year warranty on body AND probe	●	●	
Reading Storage Capacity	250 per probe	100,000 in up to 1,000 batches	
Onscreen Batch Annotation — Add notes, change batch names and more with built-in QWERTY keyboard		●	
Live graphing of measurement data		●	
Connection Options			
Sealed USB port for fast, simple connection to a PC and to supply continuous power. USB cable included.	●	●	
 Bluetooth 4.0 technology for data transfer to a mobile device running the PosiTector App or optional portable printer. BLE API available for integration into third-party software.		●	
WiFi technology wirelessly synchronizes with PosiSoft.net and downloads software updates		●	



Removeable Cabled Probe	Probe Model SHD-D	
	Typical Applications:	Medium to extra hard materials such as hard rubber, epoxies, hard plastics, PVC, acrylic, etc.
	Measurement Range:	0 - 100
	Accuracy:	± 1
	Resolution	0.1

PosiTector SHD Shore Hardness Durometer is a handheld electronic instrument that measures the indentation hardness of non-metallic materials.

Order Code	Description
<input checked="" type="checkbox"/> SHDD1	PosiTector Standard with SHD D Probe
<input type="checkbox"/> SHDD3	PosiTector Advanced with SHD D Probe

All Gages Feature...

Simple

- Easy-to-read digital display
- User-adjustable measurement time with onscreen countdown to conform to national and international standards
- Enhanced one-handed menu navigation
- RESET feature instantly restores factory settings

Durable

- Solvent, acid, oil, water and dust resistant — weatherproof
- Shock-absorbing, protective rubber holster with belt clip
- Hardened steel indenter
- Two year warranty on gage body AND probe

Accurate

- Certificate of Calibration showing traceability to NIST included (Long Form)
- Auto Ignore mode disregards hardness readings below 20 and above 90 per international standards
- Hi-RES mode increases displayed resolution to 0.1
- Includes test block to verify operation
- Conforms to ASTM D2240, ISO 868/7267/7619 and DIN 53505

Versatile

- High Contrast LCD with backlit display
- Selectable display languages
- Flip display enables right-side-up viewing
- Uses alkaline or rechargeable batteries (built-in charger)

Powerful

- Continually displays/updates average, standard deviation, min/max hardness and number of readings while measuring
- HiLo alarm audibly and visibly alerts when measurements exceed user-specified limits
- Sealed USB port for fast, simple connection to a PC and to supply continuous power. USB cable included.
- Software updates via web keep your gage current
- Every stored measurement is date and time stamped
- Software Solutions for viewing, analyzing & reporting data. See page 3 for a complete overview of these options.



The PosiTector *SHD Shore Hardness Durometer* can be used as a handheld instrument or placed in a test stand to reduce operator influence.



All gages come complete with test block, protective rubber holster with belt clip, wrist strap, 3 AAA alkaline batteries, instructions, protective lens shield, convenient carrying case, Long Form Certificate of Calibration traceable to NIST USB cable, PosiSoft Software, two (2) year warranty.

SIZE: 137 x 61 x 28 mm (5.4" x 2.4" x 1.1")

BODY WEIGHT: 185 g (6.5 oz.) without batteries

CONFORMS TO: ASTM D2240, ISO 868/7267/7619 and DIN 53505

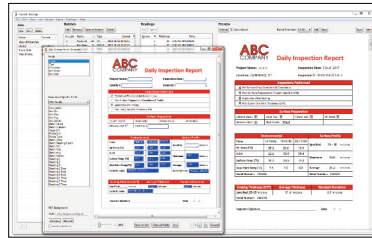
PosiSoft® Suite of Software

Four FREE and unique ways to view and report your PosiTector and PosiTest data

PosiSoft Desktop — PC/Mac

Powerful desktop software for downloading, viewing, printing and archiving measurement data. No internet connection required.

- Import readings directly from the gage via USB or from legacy PosiSoft desktop versions
- Synchronize measurement data including readings, notes and pictures to and from PosiSoft.net
- Import/Export Templates and Jobs to share with other users
- Import PDF forms and overlay **Custom Fields** for automatic population of inspection and measurement data
- Report preview automatically refreshes as changes are made



Prompted Batch Mode

Create pre-defined batches with onscreen text and image prompts for each reading and upload to PosiTector 6000 gages (Advanced models only).

- Ideal for ensuring a consistent measurement pattern for repetitive jobs or when specific measurement locations are required
- Create and store multiple templates for different jobs



PosiTector App — Mobile

Mobile app connects PosiTector Advanced instruments, the PosiTector SmartLink and the PosiTest AT-A to your iOS or Android smart device.

- Auto pairing Bluetooth BLE connection
- Automatically generate user-formatted reports and share via email, text, cloud storage services like Dropbox, and more
- Export readings to PosiSoft Desktop or synchronize readings to and from PosiSoft.net for further reporting and archival options

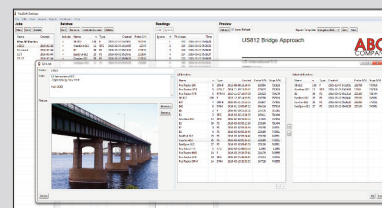
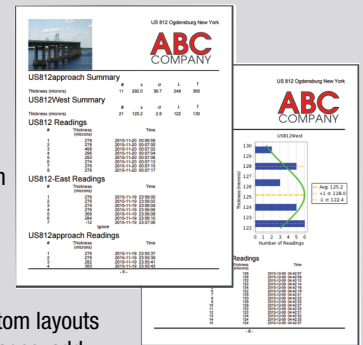


PosiSoft Custom PDF Report Generator

Easily create reports from your measurement data in seconds.

featured on
PosiSoft Desktop
PosiSoft.net
PosiTector App

- Include inspection information such as on-site pictures, screen captures, notes and more to communicate important details
- Create and save multiple custom layouts as templates – insert cover pages, add logos/images, and select font and point size
- Select the information to include for each product type – charts, histograms, readings, time stamps and more
- Compile multi-batch reports from one or more probes and instrument types
- Export readings as comma separated value (.CSV) files which can easily be imported into Excel and other supporting applications

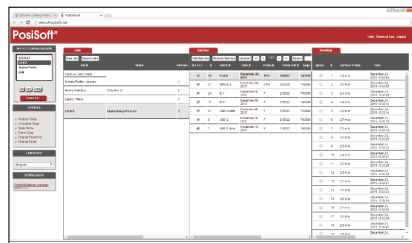


Jobs feature consolidates batches into groups to keep measurement data organized and to quickly create multi-batch reports (not available on PosiTector App)

PosiSoft.net — Web-based

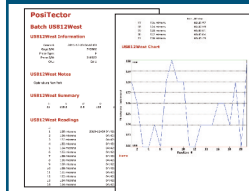
A web-based application offering secure centralized management of readings. Access your data from any web-connected device.

- Synchronize data when connected via USB or WiFi
- Synchronize measurement data including readings, notes and pictures with PosiSoft Desktop and PosiTector App
- Securely store measurement data in the cloud and share with authorized users via a secure login



Jobs Batches Readings

PosiSoft USB Drive — Gage Based



A simple gage interface to retrieve data in a manner similar to USB flash drives, cameras, or digital audio players. No software to install or internet connection required.

- View and print readings and graphs using universal PC/Mac web browsers and file explorers
- Measurement data can be printed quickly from a formatted HTML report or exported in .CSV format for further analysis in spreadsheets
- Simple file management - Copy and paste measurement data from the PosiTector to a local folder on your computer, network folder or cloud drive
- Access stored screen captures (snapshots) of the PosiTector display



PosiTector and PosiTest AT-A instruments can integrate with third-party software, drones, ROVs, PLCs, and robotic devices using several industry-standard communication protocols.

PosiTector Developer Resources

including Bluetooth 4.0, WiFi, USB Keyboard, and USB Serial

DeFelsko®
The Measure of Quality

DeFelsko Corporation • 800 Proctor Ave. • Ogdensburg, New York 13669-2205 USA
Toll Free 1-800-448-3835 • Tel: +1-315-393-4450 • Fax: +1-315-393-8471
techsale@defelsko.com • www.defelsko.com





INSTRUMENTOS DE MEDICIÓN INDUSTRIAL



LLÁMANOS

+52(81) 8115-1400 / +52 (81) 8173-4300

LADA Sin Costo:

01 800 087 43 75

E-mail:

ventas@twilight.mx

www.twilight.mx



/ [twilightsadecv](#)



/ [twilightsadecv](#)



/ [twilightsadecv](#)